

# 2019 ROCKDALE OPEN

## JULY 17-20, 2019

Veterans Memorial (City) Park — Rockdale, Texas  
 (Corner of Brazos & Murray Streets)

*Sponsored by Rockdale Tennis Association and*



The Rockdale  
Reporter

Parsley  
Food  
Service

MILLER-STARNES  
CHEVROLET - BUICK

Perry & Perry  
Builders/Erectors  
ppb



CITIZENS  
NATIONAL  
BANK

ROCKDALE  
COUNTRY



ROCKDALE FEDERAL  
CREDIT UNION

PRUETT  
INSURANCE

### YOUTH ONLY: 2-MATCHES GUARANTEED

*Enjoy our Night Tennis Experience, along with our resurfaced court.*

**FREE T-SHIRTS TO FIRST 50 TO ENTER.**

#### YOUTH TOURNAMENT July 17-18

Play begins at 4 p.m. on Wednesday, July 17

10 and Under  
12 and Under  
14 and Under  
16 and Under  
18 and Under



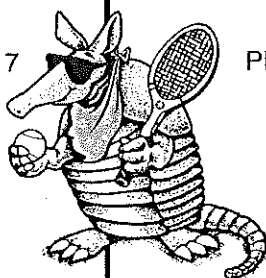
GS, GD,  
BS, BD

18 and Under Mixed  
14 and Under Mixed

Trophies to 1st and 2nd places in each event.

Age determined as of July 12.

Directors: Shelly Sanders, Sparky Thomason



#### ADULT TOURNAMENT July 19-20

Play begins at 6 p.m. Friday, July 19

Open Division  
MS, MD, WS, WD, MXD

Tournament Division  
MS, MD, WS, WD, MXD

Players must stay within their division in all events.

*NOTE: Youth players who wish to play in adult tournament MUST play in Open Division.*

Director: Sparky Thomason

General Information: Events will be limited to draws of 16, accepted on earliest postmark basis. **Events may be combined if necessary.** Balls will be furnished. A 15-minute default rule will be in effect. Check in 30 minutes prior to match. **There will be a consolation draw offered to those who lose their first-round match (youth division only).**

Playing Times: YOUTH DIVISION—Call Tuesday, July 16, telephone 512-760-6100 (Shelly)

ADULT DIVISION—Call Thursday, July 18, telephone 512-545-2266 (Sparky)

**ENTRY FORM ON REVERSE SIDE**

# 2019 Rockdale Open Entry Form

*Each player must fill out one form*

Name \_\_\_\_\_

Address \_\_\_\_\_

City, State, Zip \_\_\_\_\_

Telephone – Home \_\_\_\_\_ Cell \_\_\_\_\_

Email address \_\_\_\_\_

T-shirt size (upon availability) \_\_\_\_\_ Sizes AS, AM, AL, AXL and AXXL

**Entry Limit & Fees:** \$12 per person per event. Make checks payable to Rockdale Tennis Association.  
Adult division, limit two (2) events for each person.  
Youth division, limit two (2) events plus mixed doubles.  
Fees MUST accompany each entry. No entries will be placed in draw until fees are received.

**Mail to:** Youth entries: Shelly Sanders, 2003 Sager, Rockdale, TX 76567  
Adult entries: Sparky Thomason, 2416 Post Oak Rd., Rockdale, TX 76567

\_\_\_\_\_ Adult Entries – Division \_\_\_\_\_ **DEADLINE: July 12, 2019 –**  
\_\_\_\_\_ Youth Entries – Age \_\_\_\_\_ (as of July 12, 2019) **in hands of director**

**List events:** (Example: 10 girls singles, OR 18 boys doubles, OR 14 mixed)

1. \_\_\_\_\_

2. \_\_\_\_\_ partner \_\_\_\_\_

3. <sup>YOUTH</sup>  
<sup>MIXED</sup>  
ONLY \_\_\_\_\_ partner \_\_\_\_\_

**\$12.00 per event.** Amount enclosed \$ \_\_\_\_\_ List seeding information on separate paper

*LIABILITY AND MEDICAL RELEASE: I hereby release the Rockdale Open, its tournament personnel/sponsors, the City of Rockdale and the Rockdale ISD, of all responsibility in the event of accident or injury. I also consent to emergency medical and/or hospital service that may be sought for me by tournament personnel.*

Participant's signature \_\_\_\_\_ Date \_\_\_\_\_

*(Parent or guardian if youth entry)*