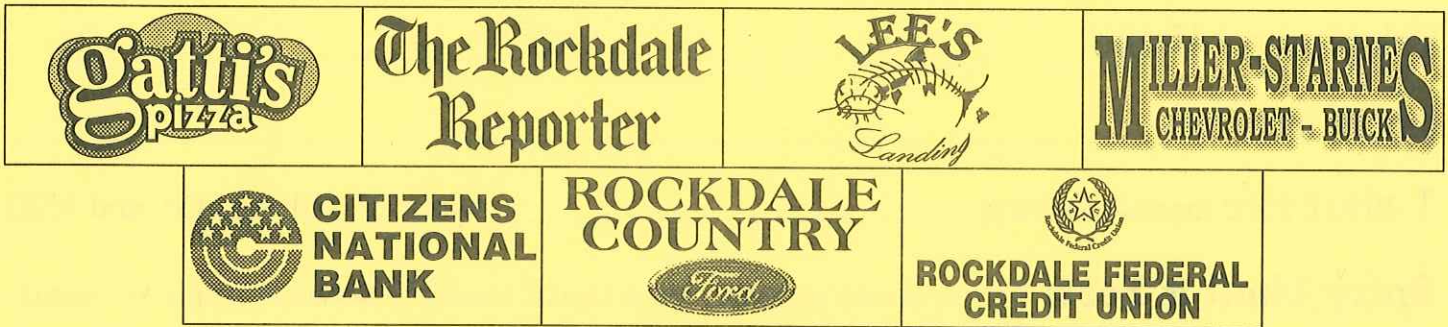


2018 ROCKDALE OPEN

JULY 11-15, 2018

Veterans Memorial (City) Park — Rockdale, Texas
 (Corner of Brazos & Murray Streets)

Sponsored by Rockdale Tennis Association and



YOUTH ONLY: 2-MATCHES GUARANTEED

Enjoy our Night Tennis Experience, along with our newly-resurfaced court.

FREE T-SHIRTS TO FIRST 50 TO ENTER.

YOUTH TOURNAMENT July 11-12

Play begins at 4 p.m. on Wednesday, July 11

10 and Under
 12 and Under
 14 and Under
 16 and Under
 18 and Under



GS, GD,
 BS, BD

18 and Under Mixed
 14 and Under Mixed

Trophies to 1st and 2nd places in each event.

Age determined as of July 9.

Directors: Shelly Sanders, Sparky Thomason

ADULT TOURNAMENT July 14-15

Play begins at 6 p.m. Friday, July 14

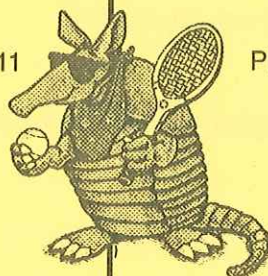
Open Division
 MS, MD, WS, WD, MXD

Tournament Division
 MS, MD, WS, WD, MXD

Players must stay within their division in all events.

NOTE: Youth players who wish to play in adult tournament MUST play in Open Division.

Director: Sparky Thomason



General Information: Events will be limited to draws of 16, accepted on earliest postmark basis. **Events may be combined if necessary.** Balls will be furnished. A 15-minute default rule will be in effect. Check in 30 minutes prior to match. **There will be a consolation draw offered to those who lose their first-round match (youth division only).**

Playing Times: YOUTH DIVISION—Call Tuesday, July 10, telephone 512-760-6100 (Shelly)

ADULT DIVISION—Call Thursday, July 12, telephone 512-545-2266 (Sparky)

For local entries, draws will be posted at City Park the day before play begins.

ENTRY FORM ON REVERSE SIDE

2018 Rockdale Open Entry Form

Each player must fill out one form

Name _____

Address _____

City, State, Zip _____

Telephone – Home _____ Cell _____

Email address _____

T-shirt size (upon availability) _____ Sizes AS, AM, AL, AXL and AXXL

Entry Limit & Fees: \$12 per person per event. Make checks payable to Rockdale Tennis Association.
Adult division, limit two (2) events for each person.
Youth division, limit two (2) events plus mixed doubles.
Fees MUST accompany each entry. No entries will be placed in draw until fees are received.

Mail to: Youth entries: Shelly Sanders, 2003 Sager, Rockdale, TX 76567
Adult entries: Sparky Thomason, 2416 Post Oak Rd., Rockdale, TX 76567

_____ Adult Entries – Division _____ **DEADLINE: July 9, 2018 –**
_____ Youth Entries – Age _____ (as of July 9, 2018) **in hands of director**

List events: (Example: 10 girls singles, OR 18 boys doubles, OR 14 mixed)

1. _____

2. _____ partner _____

YOUTH
MIXED
3. ONLY _____ partner _____

\$12.00 per event. Amount enclosed \$ _____ List seeding information on separate paper

LIABILITY AND MEDICAL RELEASE: I hereby release the Rockdale Open, its tournament personnel/sponsors, the City of Rockdale and the Rockdale ISD, of all responsibility in the event of accident or injury. I also consent to emergency medical and/or hospital service that may be sought for me by tournament personnel.

Participant's signature _____ Date _____
(Parent or guardian if youth entry)